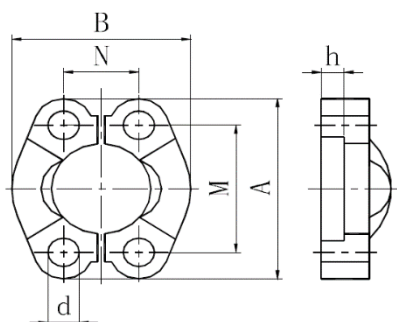


SAE Split Flange Clamp



ISO 6162 SAE J518

PART NO.	FLANGE SIZE	DIMENSIONS						BOLT *
		A	B	d	h	M	N	
ISO 6162-1 L SERIES CODE 61								
FVTL-08Z	1/2"	54	45.6	9	6.2	38.1	17.5	M8X25
FVTL-12Z	3/4"	65.6	51.8	11	6.2	47.6	22.2	M10X30
FVTL-16Z	1"	70.5	58.4	11	7.5	52.4	26.2	M10X30
FVTL-20Z	1.1/4"	79	72.6	11	7.5	58.7	30.2	M10X30
FVTL-24Z	1.1/2"	94	82.2	13.5	7.5	69.9	35.7	M12X35
FVTL-32Z	2"	102	96.4	13.5	9	77.8	42.9	M12X35
FVTL-40Z	2.1/2"	115	108.2	13.5	9	88.9	50.8	M12X40
FVTL-48Z	3"	134.4	130.6	17	9	106.4	61.9	M16X50
ISO 6162-2 S SERIES CODE 62								
FVTS-08Z	1/2"	56.8	47.2	9	7.2	40.5	18.2	M8X30
FVTS-12Z	3/4"	70.8	60	11	8.26	50.8	23.8	M10X35
FVTS-16Z	1"	81.15	69.6	13	9	57.2	27.8	M12X45
FVTS-20NZ	1.1/4"	96.68	77.2	13	9.8	66.6	31.8	M12X45
FVTS-20Z	1.1/4"	96.68	77.2	15	9.8	66.6	31.8	M14X50
FVTS-24Z	1.1/2"	113.38	95	17	12	79.4	36.6	M16X55
FVTS-32Z	2"	133	113.8	21	12	96.8	44.4	M20X70
<b>Flange clamp material</b>				<b>Part. No. suffix</b>			<b>Part No. example</b>	
Carbon steel (Default)				Z			FVTL-24Z	
304 stainless steel				SR			FVTL-24SR	
316L stainless steel				SV			FVTL-24SV	
316Ti stainless steel				SY			FVTL-24SY	
<b>Plating method</b>		<b>Part. No. suffix</b>		<b>Part No. example</b>		<b>White rust (Hours)</b>		<b>Red rust(Hours)</b>
Cr3+ plating (Default)		Z		FVTL-24Z		96		360
Durakote plating		ZD		FVTL-24ZD		360		720
Zinc-nickel plating		ZN		FVTL-24ZN		1000		-